



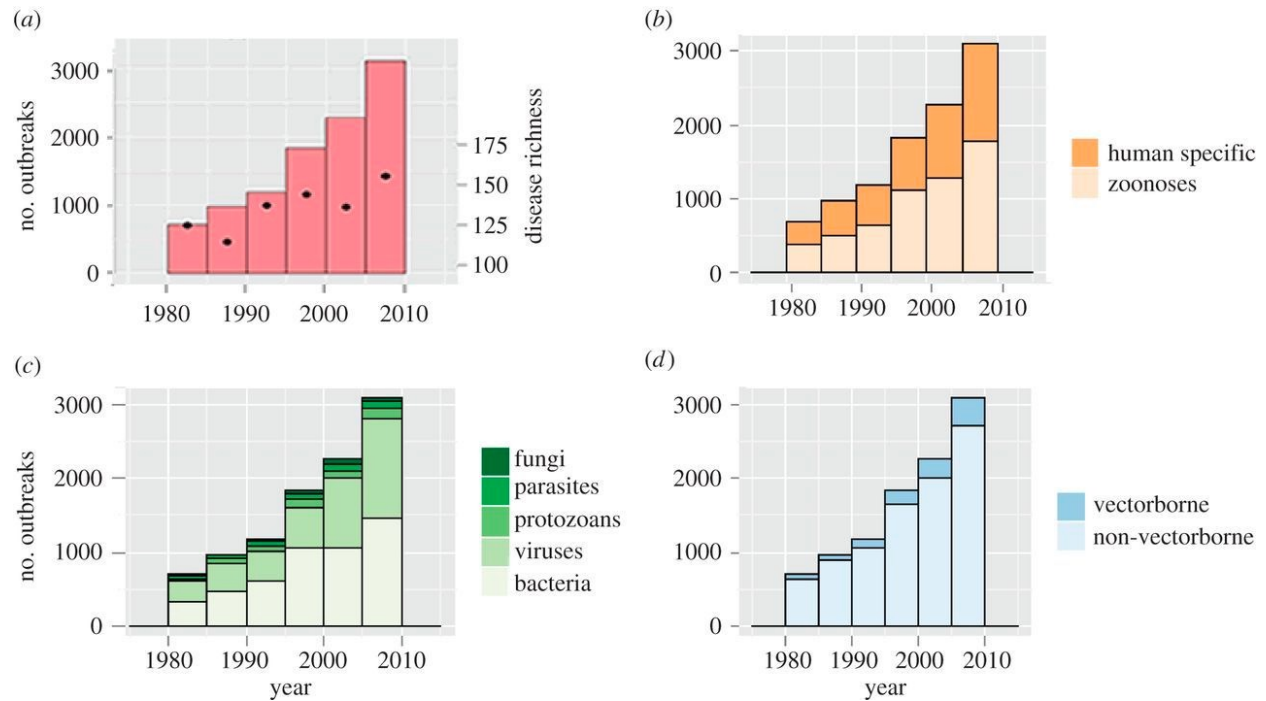
Preventing zoonotic
disease emergence

The current context

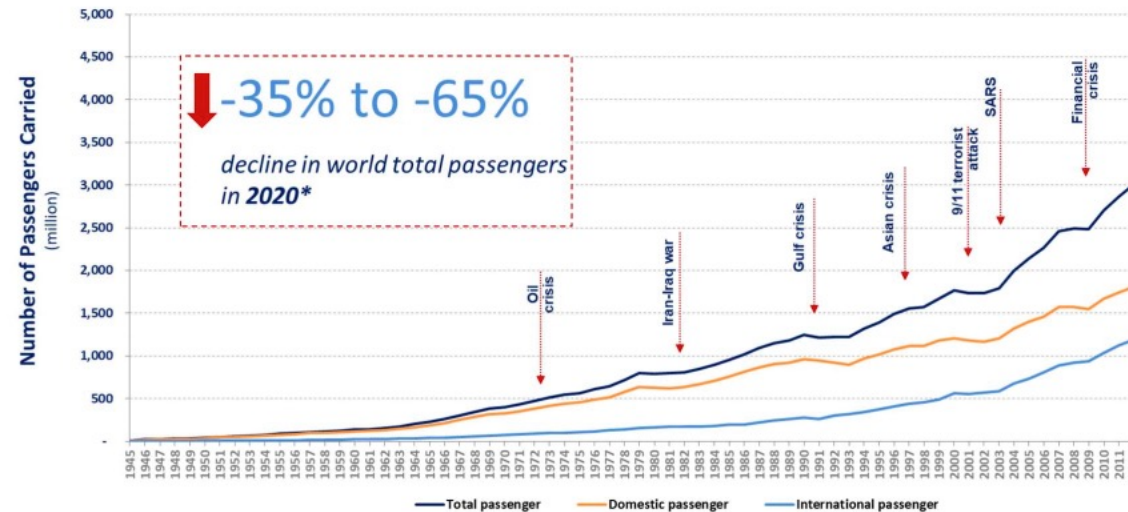
Number of emerging disease outbreaks is increasing since decades

Human mobility is also increasing since decades

All ingredients are here to observe new pandemics during the next years

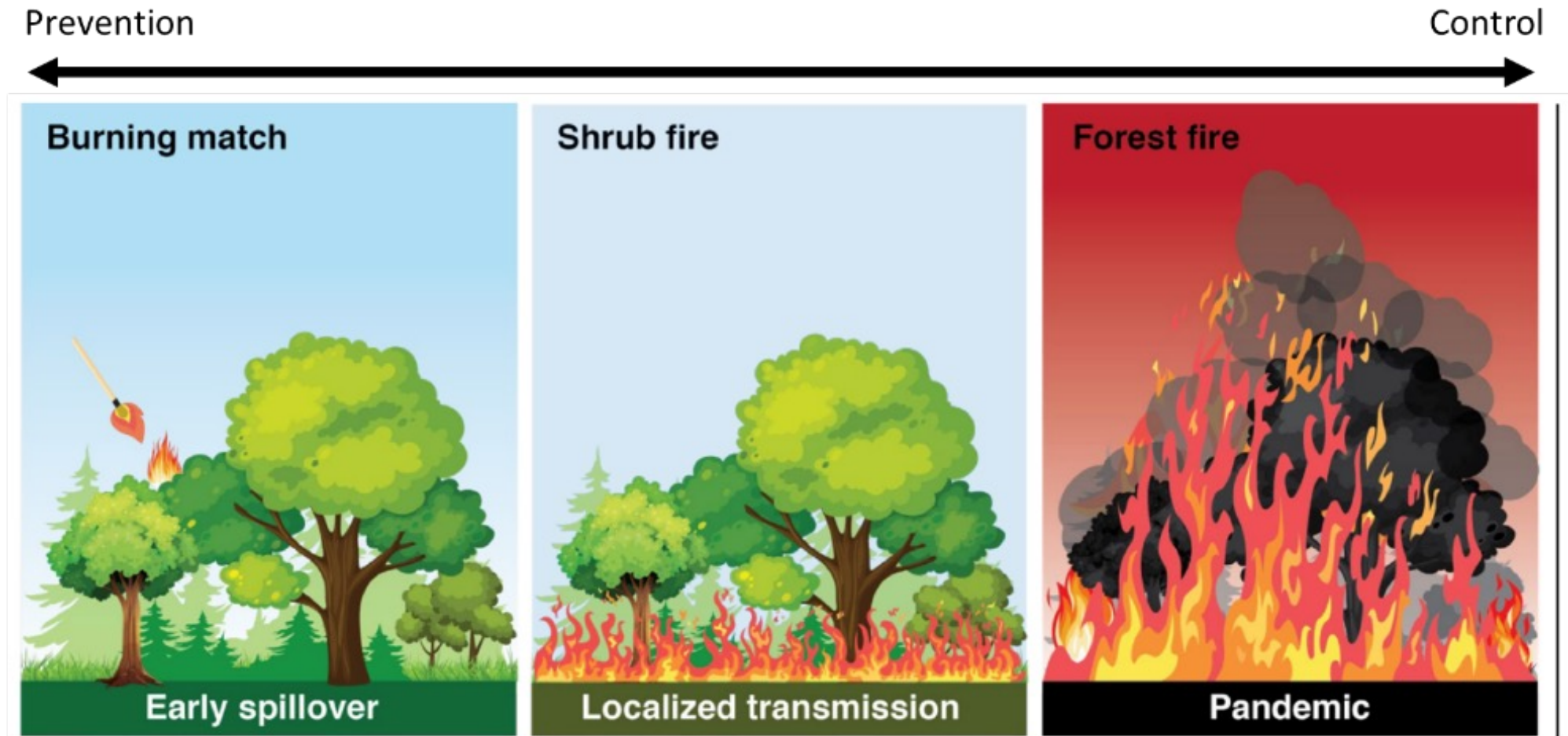


World passenger traffic evolution 1945 – 2020*



Context

The need for a paradigm shift: **PREVENTION** and **BOTTOM-UP** approaches



CORRESPONDENCE | [VOLUME 397, ISSUE 10276, P792-793, FEBRUARY 27, 2021](#)

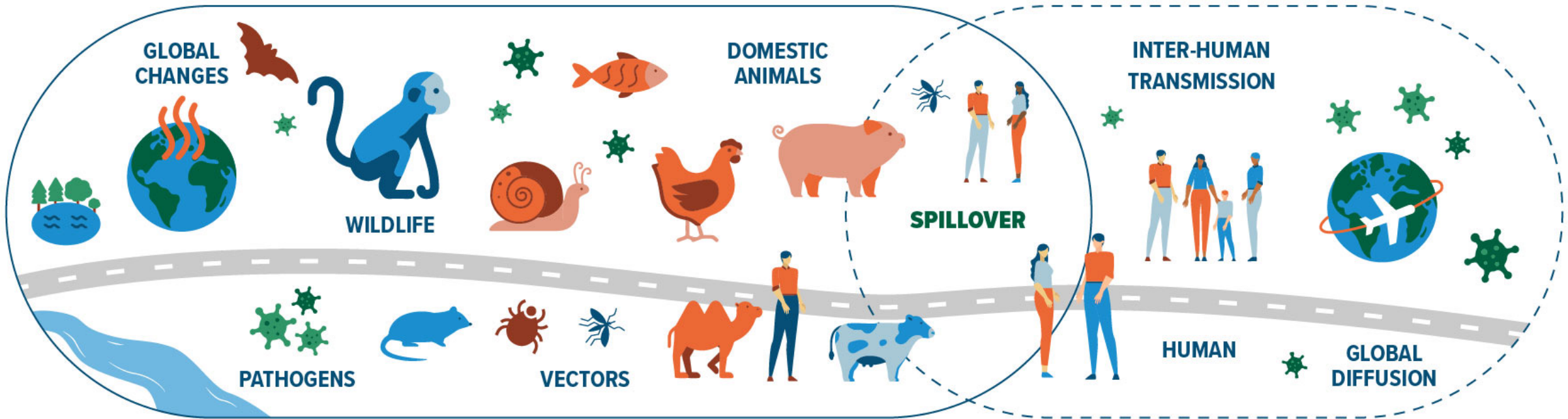
PREZODE: preventing zoonotic disease emergence

[Marisa Peyre](#) • [Gwenaël Vourc'h](#) • [Thierry Lefrançois](#) • [Yves Martin-Prevel](#) • [Jean-François Soussana](#) • [Benjamin Roche](#) ✉

- The PREZODE initiative has been officially launched at the **One Planet Summit** by the President of France Emmanuel Macron.
- PREZODE has already received the support of international organizations (WHO, FAO, OIE, UNEP, World Bank), as well as the European Commission through the voice of its President, Ursula von der Leyen



PREZODE



Emergence of Zoonotic Diseases

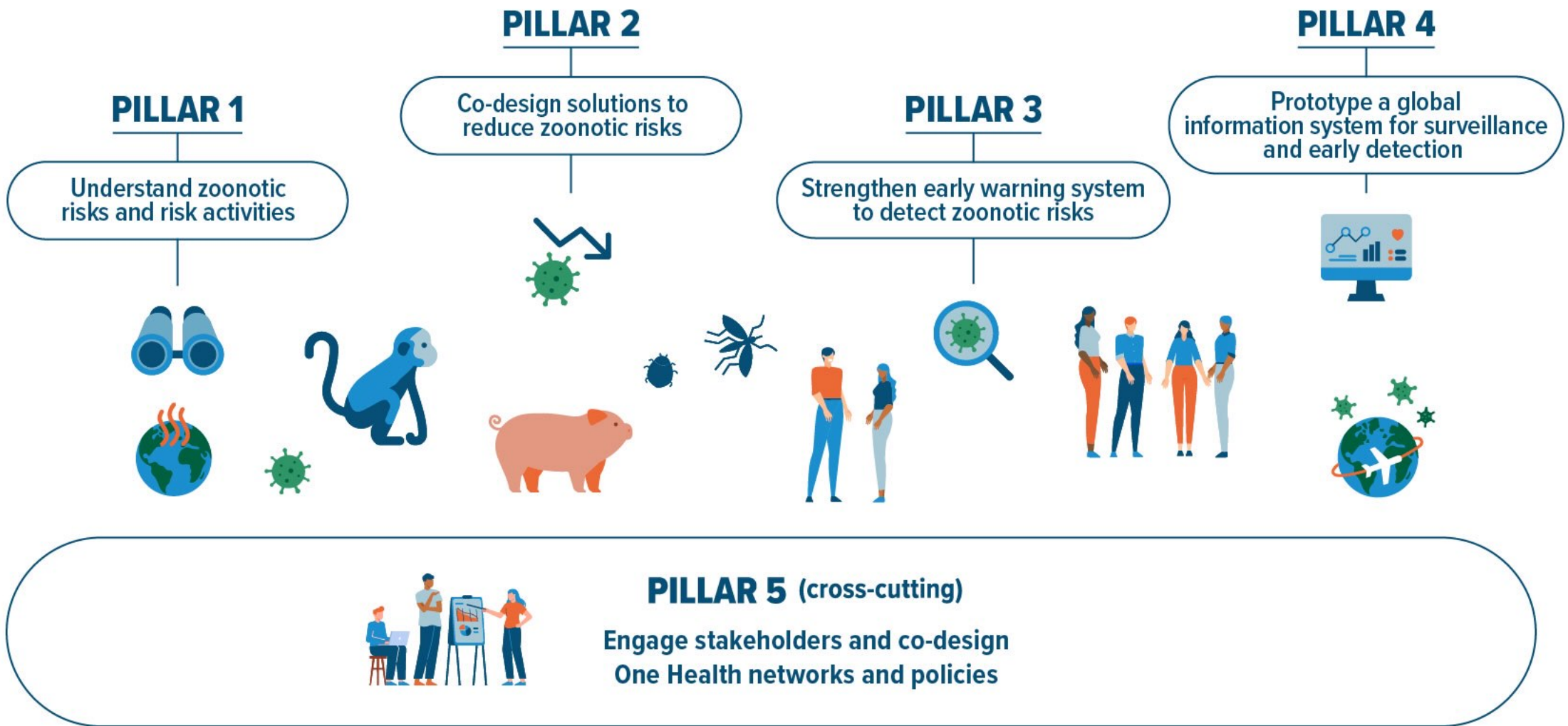
Emergence

Pathogen spillover

Localized transmission

Epidemic

Pandemic



First actions



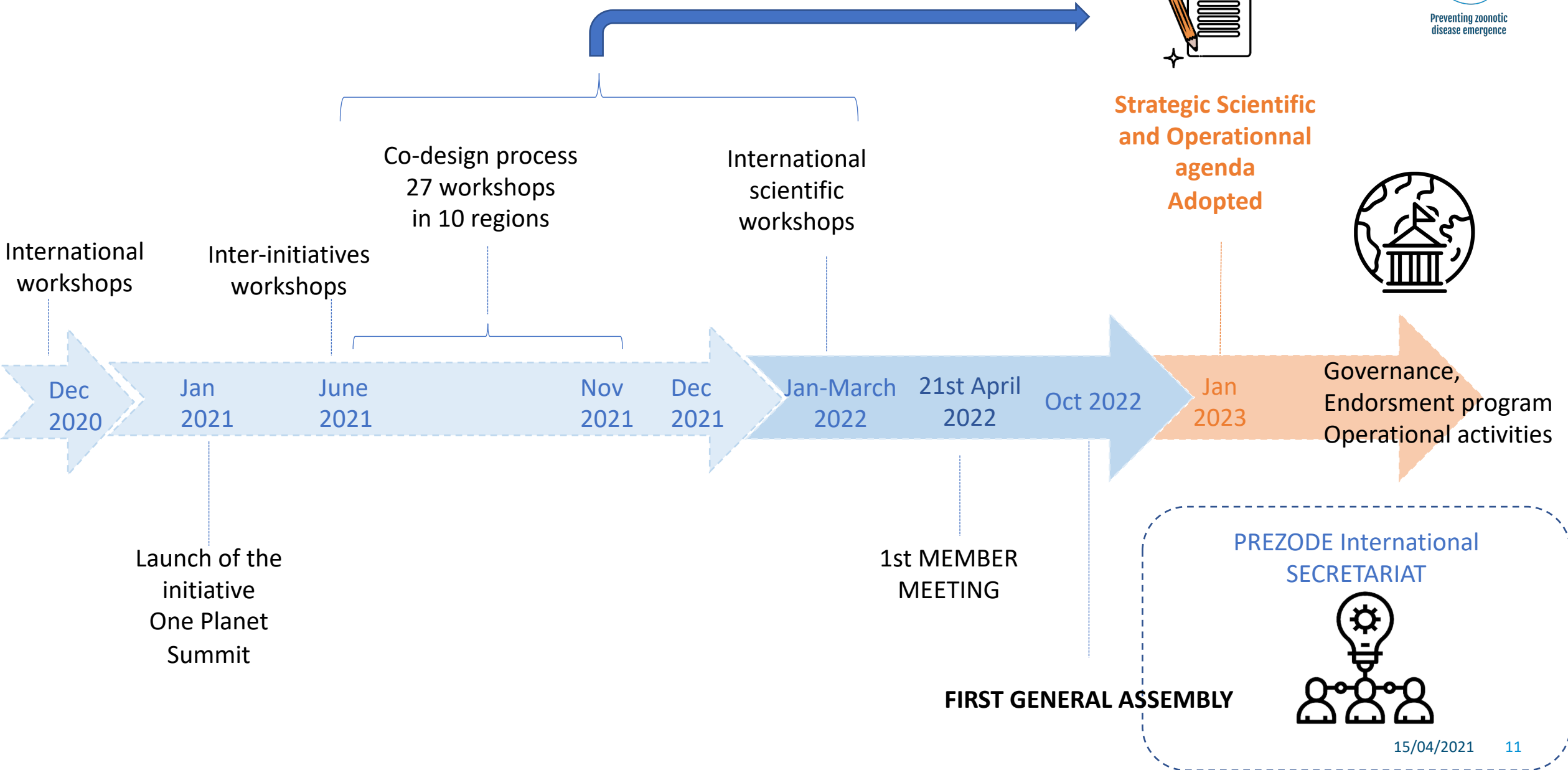


Co-construction process and Southeast asia focus

What have we done so far?



**Strategic Scientific
and Operational
agenda
Adopted**

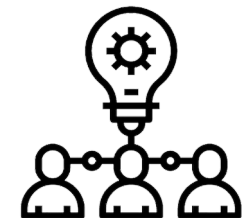


Launch of the
initiative
One Planet
Summit

1st MEMBER
MEETING

FIRST GENERAL ASSEMBLY

PREZODE International
SECRETARIAT



2021-2022: PREZODE's co-construction process to develop together its scientific and operational agenda

3 workshops in each region

- Common vision to tackle zoonotic risks
- Obstacles

1

June 2021

- Need for change
- Actors involved

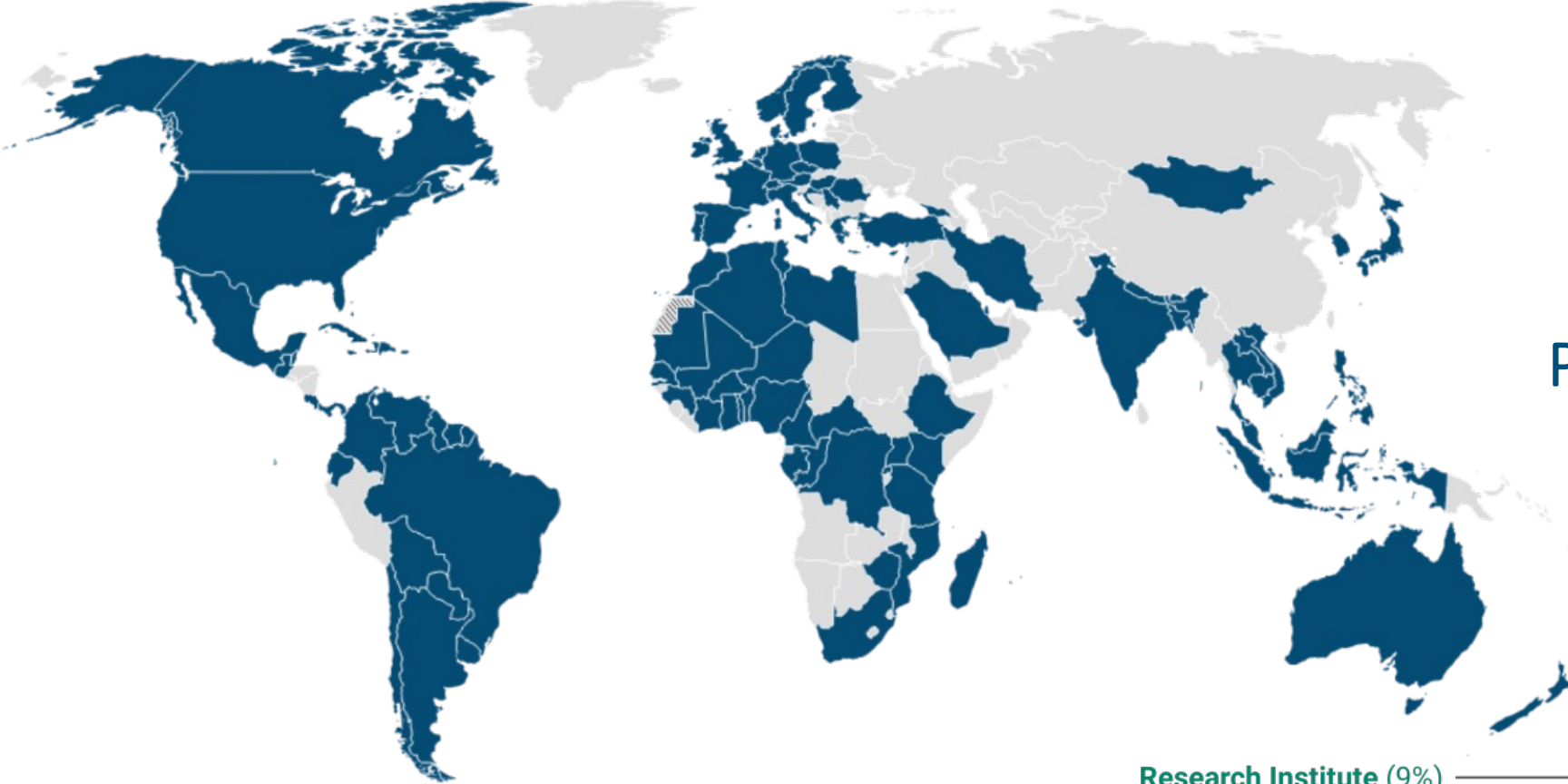
2

September 2021

- How to promote changes?
- Which activities?

3

November 2021



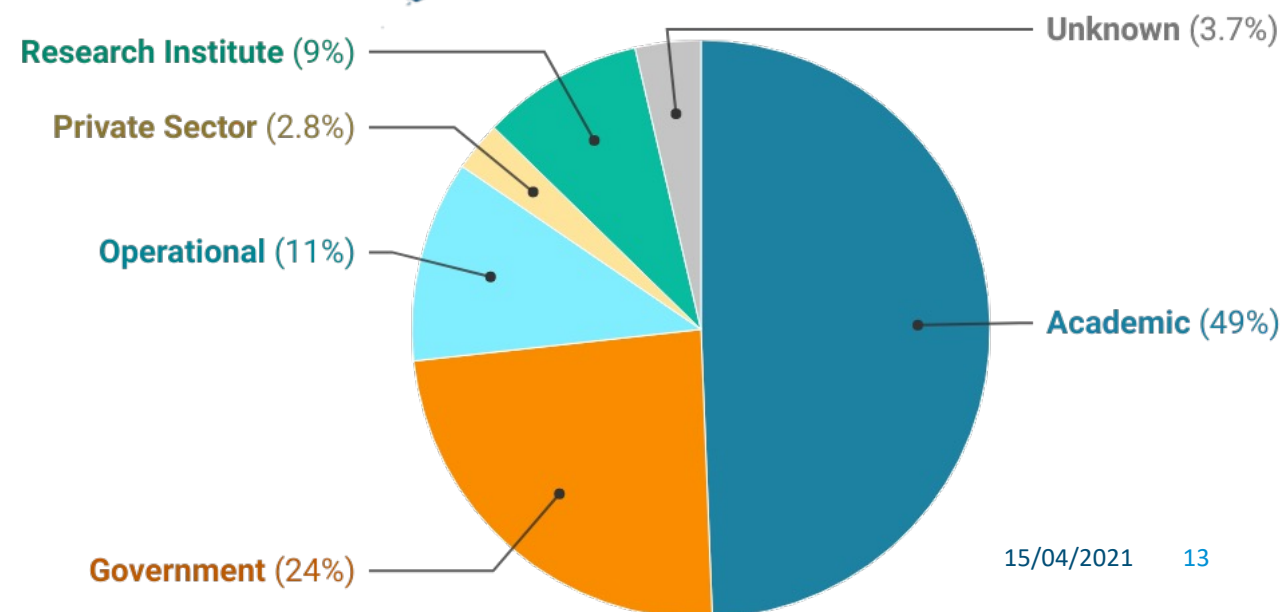
PREZODE co-design process 27 workshops

1800

→ A pool of
CONTRIBUTORS

128

→ COUNTRIES



REGION SOUTH EAST ASIA / EAST ASIA / PACIFIC

Participation

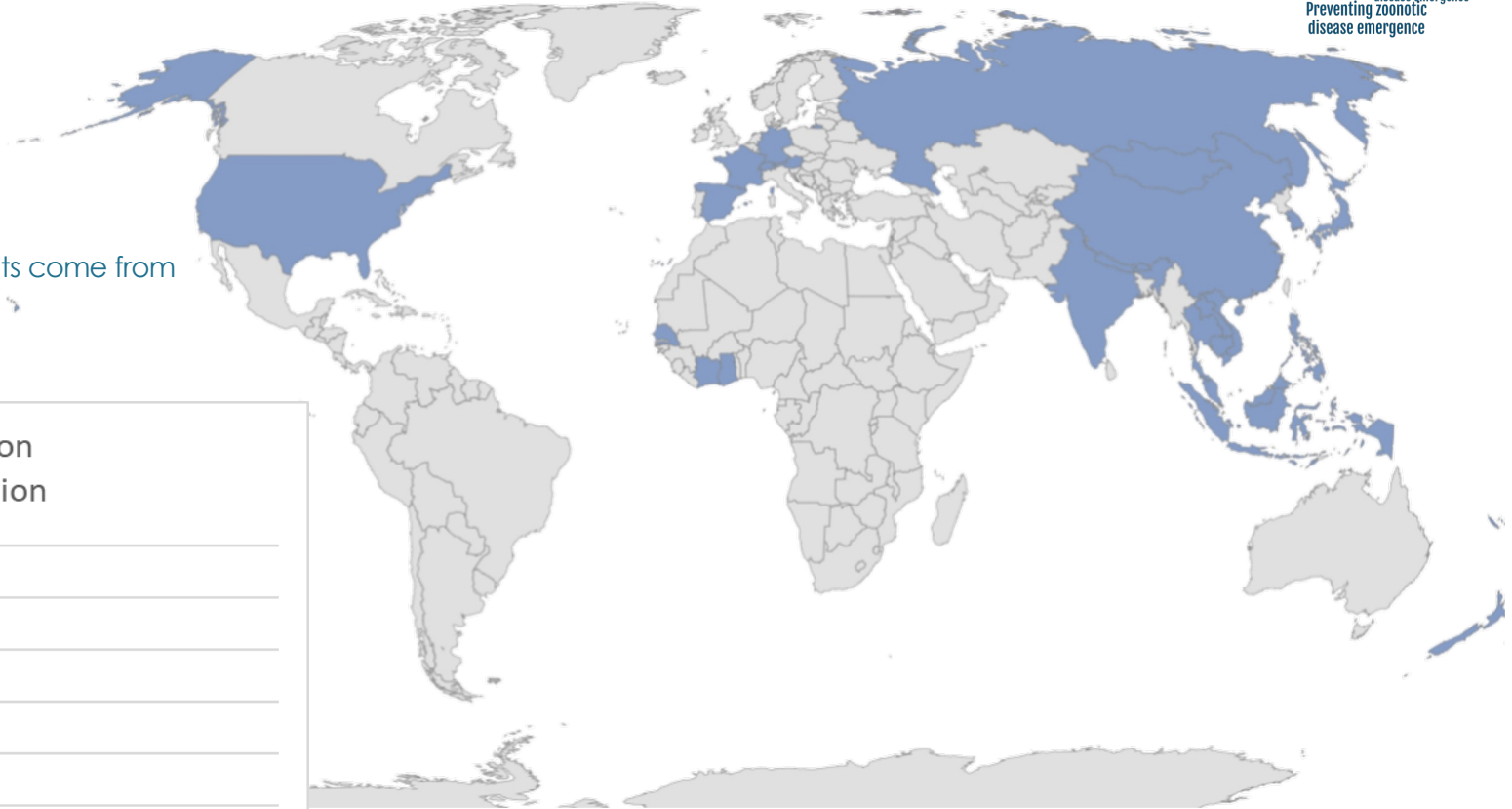


314

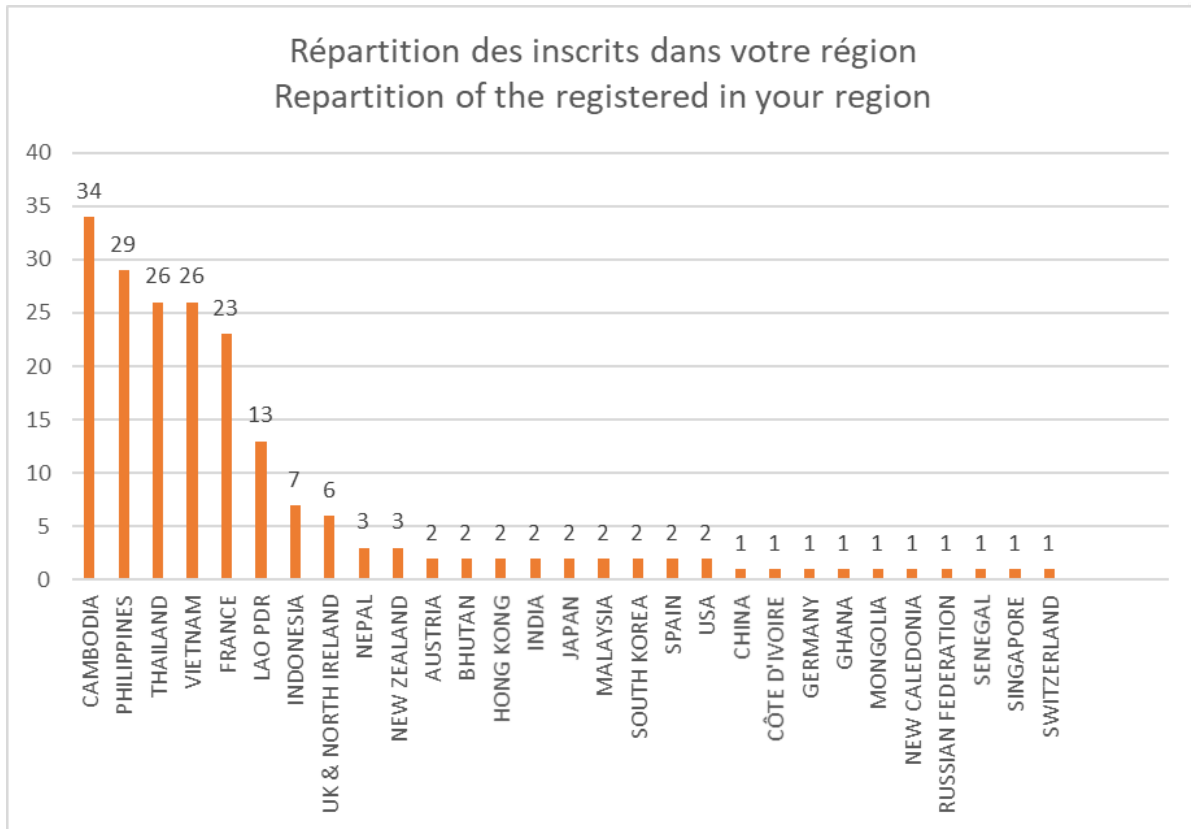
➔ Total number of registered for this region

30

➔ Number of countries from which participants come from



Répartition des inscrits dans votre région
Repartition of the registered in your region



Identified common targets and impacts

In 30 years time PREZODE would have contributed to reduce the risk of zoonotic disease emergence by...

Building up sustainable zoonotic risks prevention frameworks

with a better understanding and management of risks



Empowering local communities / national stakeholders

in the reduction and early detection of emerging risks



Building up resilient socio-ecosystems while reducing pressure on biodiversity and environmental health

to contain zoonotic risks and ensure food security from wildlife and domestic animal production



Ensuring ethical practices considering inequities and development needs of the countries and sharing of results and recommendations



Improving early detection & surveillance networks – from local to global



Strengthening collaborations and trust between sectors/levels/type of partners – from local to global



Science-policy interface

Promotion of dialogue between science & policies. Facilitate the operability of science in action



Ensuring POLITICAL engagement – and evidence based policy changes Integrated One Health policies

MAIN OBSTACLES



23

Main obstacles categories



Obstacles detailed in SEA region

PREZODE impact pathway

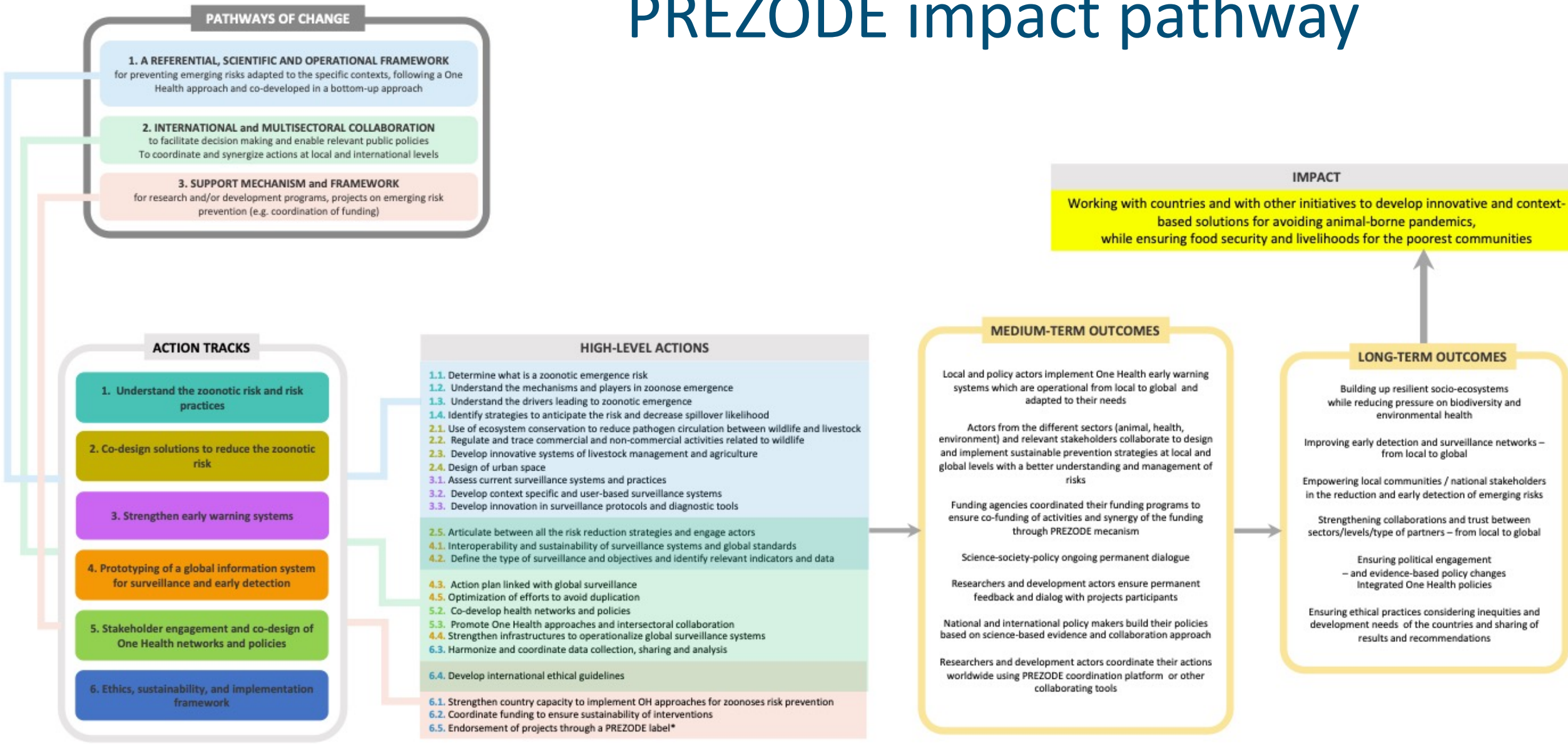


Figure 8. PREZODE initiative global impact pathway adapted from the OH-JPA impact pathway

How to engage?

- Engagement at the country and/or institution level

- PREZODE GOUVERNANCE
- GENERAL ASSEMBLY



by signing the letter of intent

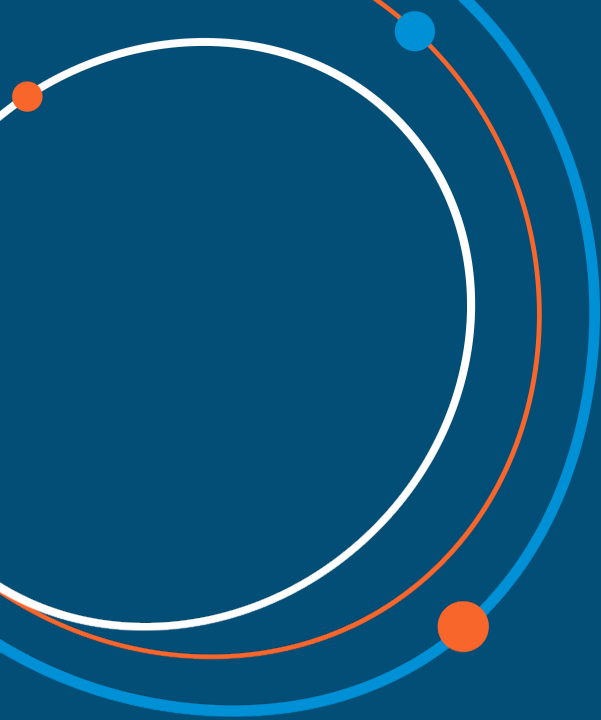
- Working groups

- CALL FOR INTEREST

- Operational projects

- Regional level
- National level
- Funding support





Preventing zoonotic
disease emergence

Merci de votre participation

Email de contact : contact@prezode.org